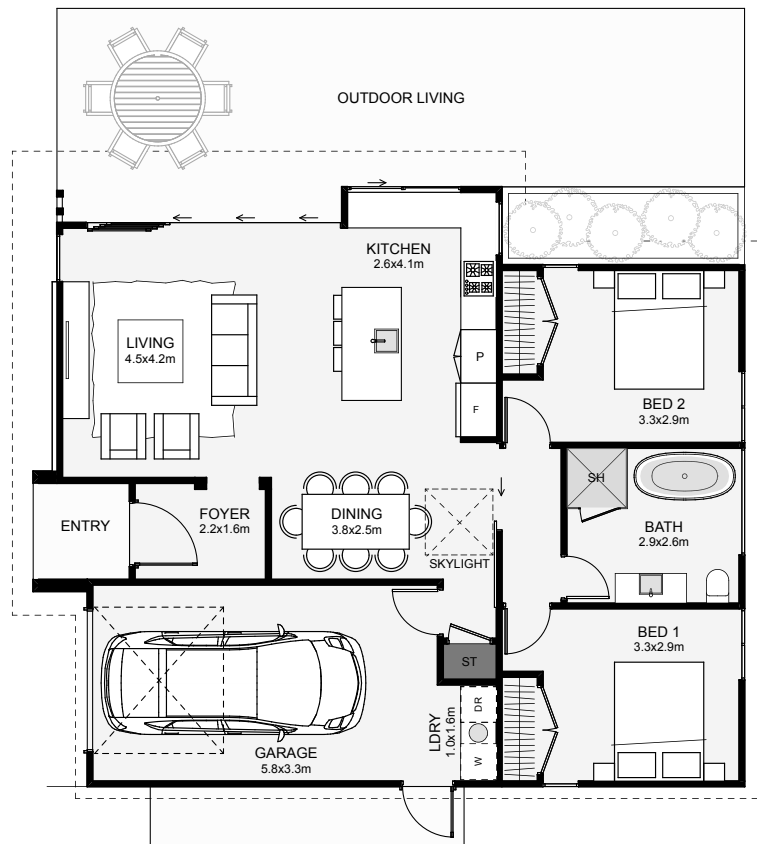




This modern two bedroom home has a strong central entrance, bordered in brick with good overhead cover. The living inside is open-plan with an offset kitchen and dining. The position of the kitchen window and outdoor living opens an optional extra, an outdoor bar! This design also works great as a duplex! If you're after a low maintenance brick home with true architectural style, this is it!



Floor Area: 104m<sup>2</sup>

 1 | 2 | 1 | 1      12.0m      10.1m

Contact us:

Phone: 027 840 2662

Email: [brett@oxbuilders.co.nz](mailto:brett@oxbuilders.co.nz)

[www.oxbuilders.co.nz](http://www.oxbuilders.co.nz)

