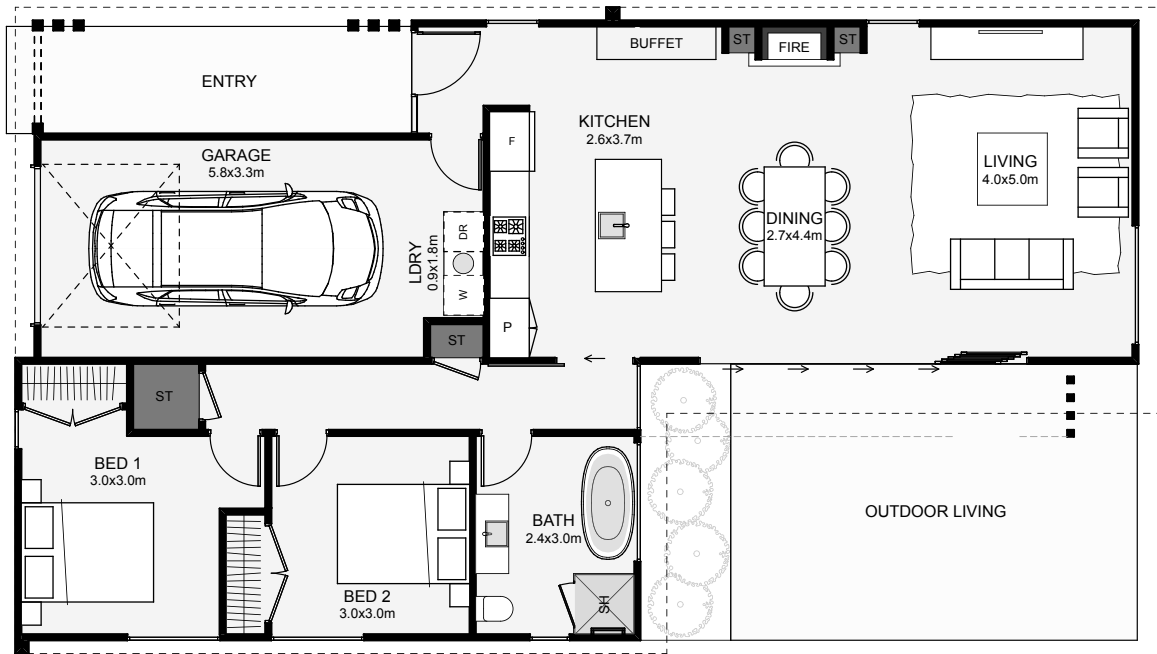




This home has real street appeal, from its straight lines, the contrasting claddings and an entry that welcomes you in! Inside, the main living is open plan with an optional sloping ceiling and fireplace. The bedrooms are in their own wing furthest from the living, perfect for minimal noise when needed. The bedroom wing also acts as a form of shelter for the outdoor living. If you're looking to go small, but want it all, you've just found it here!



Floor Area: 116m<sup>2</sup>

 1  2  1  1  17.0m  9.8m

Contact us:

Phone: 027 840 2662

Email: [brett@oxbuilders.co.nz](mailto:brett@oxbuilders.co.nz)

[www.oxbuilders.co.nz](http://www.oxbuilders.co.nz)

